

THE EFFECTS OF NANO PHOSPHATIC FERTILIZER APPLICATION ON THE PRODUCTIVITY OF SOME EGYPTIAN RICE VARIETIES (*ORYZA SATIVA* L.)

SOROUR, F. A.¹ – METWALLY, T. F.^{2*} – EL-DEGWY, I. S.¹ – ELEISAWY, E. M. – ZIDAN, A. A.²

¹*Agronomy Dept. Faculty of Agriculture, Kafrelsheikh University, Kafrelsheikh 33516, Egypt*

²*Rice Res. Dept., Field Crops Res. Inst., Agric. Res. Center (ARC), Kafrelsheikh 33717, Egypt*

**Corresponding author*

e-mail: tamerrtc@gmail.com; phone: +20-10-9671-2828

(Received 31st May 2020; accepted 14th Sep 2020)

Abstract. A tow-season field investigation was conducted at The Experimental Farm of RRTC (Rice Research & Training Center), Sakha, Kafr El-Sheikh Governorate, Egypt, during 2018 and 2019 to examine the impact of nano phosphatic fertilizer utilization on the performance of four Egyptian rice varieties. The selected tested varieties were Sakha106, Sakha107, Giza177, and Giza179. The phosphorus fertilizer treatments included superphosphate (15% P₂O₅) as a soil application, nano-phosphorus as a foliar application, superphosphate as a foliar application and control (distilled water). Superphosphate was incorporated into the soil at the rate of 36 kg ha⁻¹ for the first treatment. Nano-phosphorus (1%) and superphosphate (2%) were sprayed at 35 and 45 days after transplanting (DAT) for the second and third treatments. The application of phosphorus fertilizers increased the number of tillers per m², the number of branches per panicle, filled grains number per panicle, 1000-grain weight (g), grain yield (t ha⁻¹) and straw yield (t ha⁻¹) for all tested rice varieties. Superphosphate soil application and a foliar application of nano phosphorus to Giza 179 surpassed the other plural in terms of grain and straw yields in both seasons. Application of phosphorus as superphosphate or nano-phosphorus enhanced grain quality characteristics as well as nitrogen and phosphorus content in milled grains.

Keywords: *nano-phosphorus, foliar application, soil application, grain yield*

Introduction

Rice (*Oryza sativa* L.) is an important crop for Egyptian farmers as well as for Egyptian consumers. Rice farmers in the past used a huge quantity of synthetic fertilizers to treat their fields. The synthetic fertilizers have great benefits for enhancing rice yield. On the other hand, their cost is high and their effectiveness is low. They also pollute the environment. Heavy applications of mineral fertilizers affect the groundwater and also lead to eutrophication in aquatic ecosystems. In sustainable agricultural system, rice farmers have to look for new fertilizer technologies with high efficiency and lower pollution and cost. One of those technologies is Nanoparticles' fertilizers. The impact of Nanoparticles' fertilizers on agricultural generally and rice fields especially has been reported by several investigations.

Phosphorus (P) is critical in the metabolism of plants, playing a role in the transfer and storage of energy from photosynthesis and the metabolism of carbohydrates. It is also a structural component of the nucleic acids of genes and chromosomes and many coenzymes, phosphoproteins, and phospholipids. Application of P is recommended as a principal agronomical practice for increasing crop yield, given the fact that about 5.7 billion hectares globally require sufficient available P (Batjes, 1997). Phosphorus is quickly loaded inside grains of both indica and japonica rice genotypes between 6 and 15 days after flowering (Wang et al., 2016). With P absorption suppressed, some

varieties can maintain a stronger ability to gain greater plant biomass and grain yield with relatively lower tissue P content (Richardson and Simpson, 2011). The yield components of rice, such as panicle number, seed-setting rate, and grain weight significantly increased with P fertilization (Usman, 2013).

Nanotechnology is a very promising field of science and technology that has the potential to open up new applications in the field of agriculture and biotechnology (Siddiqui and Al-Whaibi, 2014). Ultrafine particles are between 1 and 100 nm in size. Nanoparticles can serve as magic bullets containing herbicides, chemicals, or genes which target plant parts to release the content (Jampilek and Kráľová, 2015). In agriculture, fertilizers are very important for plant growth and development, most of the applied fertilizer is rendered unavailable to the plants due to many factors such as leaching, degradation by photolysis, hydrolysis and degradation. Hence it is necessary to minimize nutrient losses in fertilization and to increase the crop yield through the exploitation of new applications with the help of nanotechnology and nanomaterials. Nanoparticles have unique physicochemical properties and the potential to boost plant metabolism (Giraldo et al., 2014).

Benzon et al. (2015) reported that the application of nanotechnology in agriculture is still in its budding stage. However, it has the potential to revolutionize agricultural systems, particularly where the issues on fertilizer applications are concerned. Nano fertilizer application promoted the growth, development, and antioxidant activity in rice and has the potential to improve crop production and plant nutrition.

Upadhyaya et al. (2017) reported that calcium phosphates are of great interest in medicine, biology, agriculture, and materials sciences. They evaluated the effect of calcium phosphates nanoparticles on biochemical changes in rice. Nanoparticles increased the growth rate and affect the physiology of the plant. Calcium phosphate nanoparticles may help in the formulation of new nano growth promoters and nano-fertilizers for agricultural use. Therefore, it could potentially help in the reduction of the quantity of fertilizer applied to crops and contributing to precision farming as it reduces fertilizer wastage and in turn environmental pollution due to agricultural malpractices. However, detail physiological and molecular understanding of its impact on rice crop plants is needed in the future to validate its prospective application in agriculture. This study aimed to examine the impact of nano phosphatic fertilizer utilization on the performance of four Egyptian rice varieties.

Materials and methods

At the experimental Farm of RRTC (Rice Research & Training Center), Sakha, Kafr El-Sheikh Governorate, Egypt, a two-year field experiment was conducted during 2018 and 2019 to study the behavior of four rice cultivars treated with different sources of phosphorus fertilization.

Representative soil samples were taken from the experimental site at the depth of 0-30 cm from the soil surface. Samples were air-dried, then ground to pass through a two mm sieve and well mixed. The procedure of soil analysis was conducted according to the methods of Black (1965) was used. The Results of chemical analysis in both seasons are shown in *Table 1*.

The selected tested varieties were Sakha106, Sakha107, Giza177, and Giza179 (*Table 2*). The treatments of phosphorus fertilizer were superphosphate (15% P₂O₅) as a soil application, nano-phosphorus as a foliar application, superphosphate as a foliar

application and control (distilled water). Superphosphate was incorporated into the soil at the rate of 36 kg P₂O₅ ha⁻¹ for the first treatment. Nano-phosphorus (1%) and superphosphate (2%) were sprayed at 35 and 45 DAT for the second and third treatments.

Table 1. Soil physical and chemical properties at the experimental site in 2017 and 2018 rice growing seasons

Soil properties	2017	2018
Mechanical analysis:		
Clay %	55.04	54.24
Silt %	30.68	31.56
Sand %	14.28	14.20
Texture	Clay	Clay
Chemical analysis:		
Organic matter %	1.48	1.63
Total nitrogen, mg kg ⁻¹	463.08	469.20
Available P, mg kg ⁻¹	13.26	12.81
pH (1:2.5 soil suspension)	8.26	8.35
EC dS.m ⁻¹ (soil paste)	1.87	2.14
Soluble cations, meq. L ⁻¹ :		
Ca ++	9.72	10.23
Mg ++	4.05	4.09
K +	1.83	1.87
Na +	15.13	15.53
Soluble anions, meq. L ⁻¹ :		
CO ₃ =	0	0
HCO ₃ -	6.16	6.93
Cl-	8.51	8.65
SO ₄ =	16.05	16.14
Available micronutrients ppm		
Fe ++	6.22	5.92
Zn ++	0.72	0.95
Mn ++	3.57	3.07

Phosphorus Nanoparticles (P) was obtained from rock superphosphate. According to the manufacturing and observation on Transmission Electron Microscopy (TEM), the particle size distributions were ranged from 30 to 60 nm (*Fig. 1*). Nano phosphorus solution was prepared freshly by dispersing nanoparticles in de-ionized water through ultrasonication (300 W, 40 kHz) for 30 min.

Table 2. Parentage, type and origin of the tested rice varieties

Varieties	Parentage	Type	Origin
Sakha106	Giza 177/Hexi 30	Japonica	Egypt
Sakha 107	Giza177/BL 1	Japonica	Egypt
Giza 177	Giza 171/Yamji No.1//Pi No.4	Japonica	Egypt
Giza 179	Gz 1368-S-5-4/Gz 6296-12-1-2-1-1	Indica/Japonica	Egypt

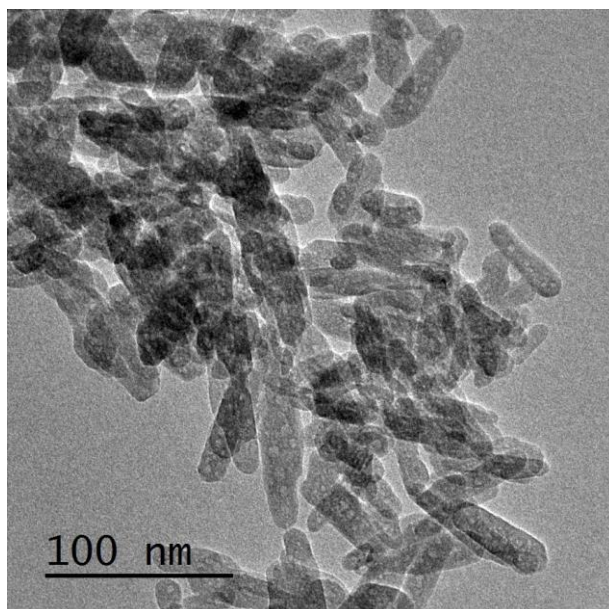


Figure 1. Phosphorus nanoparticles under the transmission electron microscopy (TEM)

Split-Plot Design with four replicates was used. Rice cultivars and phosphorus fertilization treatments were arranged as main plot and sub-plot, respectively. The plot size was 12 m². Rice seeds were sown in the nursery on the 2nd and 4th of May for 2017 and, respectively. Transplanted was done after 28 days of sowing nurseries with three to four seedlings per hill, spaced 20 X 20 cm within and between rows. All plots received optimum cultural practices. The recommended dosages of nitrogen and potassium were applied according to the recommendations of RRTC. Nitrogen was applied at the rate of 165 kg N ha⁻¹ in the form of urea (46% N). Potassium was applied as potassium sulphate (50% K₂O) at the rate of 100 kg K₂O ha⁻¹.

The studied characteristics were; number of tillers m⁻², number of branches panicle⁻¹, unfilled grains number panicle⁻¹, filled grains number panicle⁻¹, 1000-grain weight (g), grain yield (t ha⁻¹) and straw yield (t ha⁻¹).

Grain quality characteristics: milling recovery was estimated according to Cruz and Khush (2000): 150 (g) cleaned rough rice at 14% moisture content was dehulled using an Experimental Huller Machine (Satake - Japan). The brown rice was separated and weighed then the hulling percentage was calculated. The brown rice was milled using MC GILL Rice Miller No.2. (S.K. Appliances – India). The total milled rice was weighed and milled rice percentage was calculated. Whole milled grains were separated from the total milled rice using a rice sizing device SKU: 61-220-50 (Seedburo – USA). The percentage of head rice was calculated.

Nitrogen and phosphorus contents in milled rice grain: samples were taken from the grain after milling (50 g of milled rice). All samples were placed in paper bags and oven-dry at 70 °C for 48 h. Grain samples were crushed to powder and digested according to Chapman and Pratt (1961). The nitrogen content of milled grains was determined by using the Microkieldahl method (Jackson, 1967). The phosphorus content of milled grain was determined using Spectronic 1201 Spectrophotometer (Milton Roy, USA) following the procedures of Watanabe and Olsen (1965).

The data was subjected to analysis of variance (Two-way ANOVA in randomized blocks), and the differences among treatment were compared by Duncan's Multiple Range Test ($P < 0.05$) according to Duncan (1955), using Costat Statistical Software.

Results and discussion

Numbers of tillers m^{-2} , branches panicle $^{-1}$, filled grains panicle $^{-1}$ and unfilled grains panicle $^{-1}$ were varied significantly among rice varieties and affected significantly by different phosphorus treatments in both seasons as shown in *Table 3*. Giza179 surpassed the other varieties in the above mention characteristics. The differentiation among the studied varieties in terms of those characteristics may be related to the genetic and physiological background of the tested varieties.

A foliar application of nano-phosphorus recorded the highest values of number of tillers per m^2 , number of branches per panicle and number of filled grains per panicle. The highest numbers of unfilled grains per panicle were recorded when phosphorus was not applied without any significant differences with the foliar application of superphosphate in the first season only. Upadhyaya et al. (2017) found that rice growth increased with an increase in the concentration of calcium phosphate nanoparticles with respect to the control. Miranda-Villagómez et al. (2019) found a positive relationship between the number of rice tillers and the initial P concentration in the nutrient solutions due to phosphorus application as nanoparticles.

Table 3. Tillers No. m^{-2} , branches No. panicle $^{-1}$, filled grains panicle $^{-1}$ and unfilled grains panicle $^{-1}$ of different rice varieties as affected by phosphorus treatment

Treatments	Tillers No. m^{-2}		Branches No. panicle $^{-1}$		Filled grains panicle $^{-1}$		Unfilled grains panicle $^{-1}$	
	2017	2018	2017	2018	2017	2018	2017	2018
Rice variety:								
Sakha 106	523.3 c	501.7 c	9.57 c	9.18 c	118.04d	122.8 c	9.88 b	8.91 b
Sakha 107	525.1 c	496.6 c	10.00 b	9.64 b	125.2b	117.3 b	7.59 d	6.90 d
Giza 177	541.1 b	520.0 b	9.99 b	9.47 bc	122.5c	114.4 c	8.57 c	7.87 c
Giza 179	583.1 a	553.6 a	10.50 a	10.40 a	141.8a	129.8 a	14.08 a	13.25 a
F test	**	**	**	**	**	**	**	**
P treatment:								
Super P (soil)	584.2 b	550.8 b	10.37 b	9.91 b	134.6b	125.3 b	8.01 b	5.16 c
Nano-P (spray)	589.9 a	562.5 a	10.71 a	10.27a	141.5a	132.4 a	8.15 b	6.36 c
Super P (spray)	523.7 c	499.1 c	9.91 c	9.43 c	121.8d	112.6 c	11.6 a	11.85 b
Control	474.8 d	459.6 d	9.56 d	9.08 d	109.8d	104.01d	12.33 a	13.57 a
F test	**	**	**	**	**	**	**	**
Interaction effect	**	**	**	**	**	**	**	**

Values with the same letter in each column indicate no significant difference ($P < 0.05$)

The interaction between rice variety and phosphorus treatment effect was significant for numbers of tillers m^{-2} , branches panicle $^{-1}$, filled grains panicle $^{-1}$ and unfilled grains panicle $^{-1}$ (*Table 4*). A foliar application of nano-phosphorus to rice variety Giza179 recorded the highest numbers of tillers per m^2 , branches per panicle and filled grains per

panicle in both seasons. There were no significant differences between the foliar application of superphosphate and nano-phosphorus to Giza179 rice variety in the first season only on number of tillers per unit area. Number of unfilled grains per panicle was higher when Giza179 did not receive any phosphorus fertilizers in both seasons which was at par with those sprayed with superphosphate in the first season only.

Table 4. Tillers No. m^{-2} , branches No. panicle⁻¹, filled grains panicle⁻¹ and unfilled grains panicle⁻¹ as affected by the interaction between rice variety and phosphorus treatment

Treatments	2017				2018			
	Sakha 106	Sakha 107	Giza 177	Giza 179	Sakha 106	Sakha 107	Giza 177	Giza 179
Tillers No. m^{-2}								
Super P (soil)	568.6cd	559.5 d	577.1bc	631.8 a	535.4e	527.2 f	550.5d	590.2 b
Nano-P (spray)	578.2 b	560.5 d	584.5b	636.2 a	548.6d	535.01e	559.6 c	606.7 a
Super P (spray)	492.9 h	515.7 f	525.9e	560.3 d	481.9h	470.8 i	511.00g	532.5ef
Control	453.6 k	464.6 j	477.1 i	504.02g	440.8k	453.5 j	458.8 j	485.2 h
Branches No. panicle⁻¹								
Super P (soil)	9.84 f	10.34 d	10.16de	11.13b	9.55 f	9.97de	9.52 f	10.62 b
Nano-P (spray)	10.25 d	10.55 c	10.33 d	11.72a	9.81 e	10.24c	10.07cd	10.97 a
Super P (spray)	9.12 h	9.93 f	10.02ef	10.58c	8.85 h	9.34 fg	9.28 g	10.24 c
Control	9.05 h	9.42 g	9.47 g	10.32d	8.53 i	9.03 h	9.00 h	9.78 e
Filled grains panicle⁻¹								
Super P (soil)	124.2 f	134.8cd	129.5e	149.7b	117.6m	124.1cde	120.7ef	139.08b
Nano-P (spray)	126.2f	136.4c	136.5c	166.8a	122.8de	126.2cd	126.9 c	153.8 a
Super P (spray)	177.8g	119.3g	117.6g	132.0de	111.5 ij	113.9 hi	108.2jk	116.9gh
Control	103.8 i	110.3h	106.4 i	118.7 g	99.3	105.1	102.07	109.4
Unfilled grains panicle⁻¹								
Super P (soil)	8.60 e	4.44 g	6.48 f	12.52b	5.86 f	3.11 h	3.57gh	8.09 e
Nano-P (spray)	10.72bcd	4.80 fg	5.65fg	11.44bc	5.79 f	4.36fgh	5.03fg	10.25 d
Super P (spray)	9.30 de	10.42cde	10.39cde	16.33 a	10.42 d	10.28 d	10.05d	16.67 b
Control	10.89bcd	10.68bcd	11.75 bc	16.02 a	13.58 c	9.87 d	12.82c	17.99 a

Different letters indicate statistical significance ($P < 0.05$) within the same characteristic and the same year

1000-grain weight, grain yield and straw yield of different rice varieties were affected significantly by phosphorus treatments as well as the interaction in both seasons (Table 5). Sakha 106 and Giza 177 recorded the highest values of 1000-grain weight in the first and second seasons, respectively. The highest values of grain and straw yields were obtained by Giza179 in both seasons. Those variations among the varieties might be due to the genetic potentiality.

Application of phosphorus fertilizers as a soil or a foliar application increased significantly the values of 1000-grain weight, grain yield and straw yield over control. The heaviest 1000-grain was observed with the application of either superphosphate as a soil application or nano phosphorus as a foliar application without any significant differences between both of them. Grain and straw yields reached to the maximum values with the application of nano phosphorus as a foliar application. Wang et al.

(2011) indicated that application of nanomaterials could increase rice grain yield. Miranda-Villagómez et al. (2019) reported that application of P nanoparticles is particularly important in early growth stages of rice plant. It is mobile within the plant and promotes the development of roots, tiller creation, early flowering, and maturation.

Table 5. 1000-grain weight (g), grain yield ($t\ ha^{-1}$) and straw yield ($t\ ha^{-1}$) of different rice varieties as affected by phosphorus treatment

Treatments	1000-grain weight (g)		Grain yield ($t\ ha^{-1}$)		Straw yield ($t\ ha^{-1}$)	
	2017	2018	2017	2018	2017	2018
Rice variety:						
Sakha 106	3.28 a	2.70 b	10.50 b	9.71 c	12.89 b	12.78 c
Sakha 107	3.14 b	2.72 b	10.14 d	9.41 d	12.39 c	12.63 d
Giza 177	3.14 b	2.88 a	10.23 c	9.99 b	12.81 b	13.02 b
Giza 179	3.03 c	2.70 b	11.28 a	10.82 a	14.11 a	14.23 a
F test	**	*	**	**	**	**
P treatment:						
Super P (soil)	3.30 a	2.86 a	10.97 ab	10.32 a	13.56 a	13.64 a
Nano-P (spray)	3.30 a	2.88 a	11.02 a	10.40 a	13.56 a	13.71 a
Super P (spray)	3.05 b	2.70 b	10.30 b	9.75 b	12.77 b	12.91 c
Control	2.91 c	2.57 c	9.86 d	9.46 c	12.31 c	12.40 c
F test	**	**	**	**	**	**
Interaction effect	**	**	**	**	**	**

Values with the same letter in each column indicate no significant difference ($P < 0.05$)

Concerning the interaction effects on 1000-grain weight, grain yield and straw yield, data in *Table 6* shows that application of phosphorus fertilizers increased 1000-grain weight for all tested rice varieties. The highest values of 1000-grain weight were recorded with the application of either superphosphate as a soil application or nano phosphorus as a foliar application to Sakha 106 in first season and to Sakha 106, Sakha 107 and Giza 177 in second season. Soil application superphosphate and a foliar application of nano phosphorus to Giza 179 surpassed the other combination in terms of grain and straw yields in both seasons.

Milling characteristics of tested rice varieties were affected significantly by phosphorus fertilizer treatments and the interaction (*Table 7*). Giza 179 recorded the highest percentages of hulling and milling grains. Sakha 106 recorded the highest percentage of head rice followed by Giza 177 in the first season. While Giza 177 rice variety produced the highest percentage of head rice in the second season. Milling characteristics were improved by the application of phosphorus fertilizers whatever the source and method. Application of either superphosphate as a soil application or nano phosphorus as a foliar application produced the highest percentages of hulling, milling and head rice in both seasons without any significant differences between both of them. The nano-fertilizers have a higher surface area it is mainly due to very less size of particles which provide more sites to facilitate the different metabolic processes in the plant system result production of more photosynthesis which improves the grain filling as well as milling characteristics (Qureshi et al., 2019).

Table 6. 1000-grain weight (g), grain yield (t ha⁻¹), straw yield (t ha⁻¹) and harvest index as affected by the interaction between rice variety and phosphorus treatment

Treatments	2017				2018			
	Sakha 106	Sakha 107	Giza 177	Giza 179	Sakha 106	Sakha 107	Giza 177	Giza 179
1000-grain weight (g)								
Super P (soil)	3.49 a	3.28 cd	3.26cde	3.17def	2.86a-d	2.83a-e	2.95 ab	2.80 b-f
Nano-P (spray)	3.41 ab	3.29bcd	3.33 bc	3.19def	2.92abc	2.82a-e	3.00 a	2.76 c-g
Super P (spray)	3.14 ef	3.02gh	3.08 fg	2.95 hi	2.68d-g	2.63 fg	2.83a-e	2.66 efg
Control	2.94 hi	2.96 gh	2.90 hi	2.83 i	2.36 h	2.60 g	2.72d-g	2.59 g
Grain yield (t ha⁻¹)								
Super P (soil)	11.06b	10.51d	10.53d	11.78a	10.05 f	9.74h	10.26d	11.24 a
Nano-P (spray)	11.02b	10.53d	10.67c	11.85a	10.17e	9.75h	10.38c	11.29a
Super P (spray)	10.24e	9.85 f	10.17e	10.95b	9.50 i	9.17 i	9.84 g	10.51 b
Control	9.66 g	9.67 g	9.56 g	10.53d	9.13 i	8.99k	9.47 i	10.25 d
Straw yield (t ha⁻¹)								
Super P (soil)	13.39c	12.82e	13.25cd	14.76 a	13.30 d	13.10 e	13.35 d	14.81 a
Nano-P (spray)	13.68b	12.4g	13.27cd	14.82 a	13.41cd	13.05ef	13.5 c	14.90 a
Super P (spray)	12.53fg	12.2h	12.68 ef	13.64 b	12.45 g	12.31 h	12.95 f	13.93 b
Control	11.95 i	12.02i	12.05 i	13.22 d	11.97 i	12.06 i	12.27 h	13.30 d

Different letters indicate statistical significance ($P < 0.05$) within the same characteristic and the same year

Table 7. Hulling, milling and head rice % of different rice varieties as affected by phosphorus treatment

Treatments	Hulling %		Milling %		Head rice %	
	2017	2018	2017	2018	2017	2018
Rice variety:						
Sakha 106	76.21 b	75.26 c	68.48 b	67.06 c	65.64 a	60.28b
Sakha 107	73.27 c	74.06d	65.14 d	66.42 c	60.39 c	59.32c
Giza 177	73.74 c	78.29b	66.92 c	69.40 b	64.17 b	63.36a
Giza 179	78.50 a	81.33a	71.44 a	72.68 a	59.82 d	60.32b
F test	**	**	**	**	**	**
P treatment:						
Super P (soil)	78.77 a	79.66 a	70.47 a	70.78 a	67.18 a	63.67b
Nano-P (spray)	78.92 a	80.10 a	70.80 a	71.19 a	66.73 a	64.60a
Super P (spray)	72.67 b	75.23b	65.92 b	67.43 b	59.57 b	58.27c
Control	71.38 c	73.95 c	64.78 c	66.17 c	56.55 c	56.73d
F test	**	**	**	**	**	**
Interaction effect	**	**	**	**	**	**

Values with the same letter in each column indicate no significant difference ($P < 0.05$)

Regarding the interaction effect, the application of phosphorus fertilizers enhanced their milling characteristics of all tested varieties (Table 8). The highest percentage of hulling was obtained when superphosphate as a soil application or nano phosphorus as a

foliar application was applied to Sakha 106 and Giza 179 in first season and to Giza 179 only in the second season. Application of superphosphate as a soil application or nano phosphorus as a foliar application to Giza 179 recorded the highest values of milling percentage in both seasons. Moreover, there were no significant differences between the effect of mentioned treatments on milling percentage and application of superphosphate as a soil application in first season only. The highest percentages of head rice were observed when superphosphate as a soil application or nano phosphorus as a foliar application was applied to Sakha 106 and Giza 177 in the first and second season respectively.

Table 8. Hulling, milling and head rice % as affected by the interaction between rice variety and phosphorus treatment

Treatments	2017				2018			
	Sakha 106	Sakha 107	Giza 177	Giza 179	Sakha 106	Sakha 107	Giza 177	Giza 179
Hulling %								
Super P (soil)	81.41 a	76.68cd	76.08cd	80.92 a	77.80e	77.09e	80.42cd	83.35 a
Nano-P (spray)	79.63ab	76.78cd	77.84 bc	81.42a	79.50d	76.89e	81.70bc	82.34ab
Super P (spray)	73.33ef	70.44gh	72.04 fg	74.85de	73.06f	71.55g	77.11 e	79.20 d
Control	70.49gh	69.20 h	69.01 h	76.82 c	70.67g	70.74g	73.94 f	80.46cd
Milling %								
Super P (soil)	72.74ab	67.43ef	68.72de	73.01ab	69.21 d	68.81 d	70.89bc	74.19 a
Nano-P (spray)	71.53bc	67.68 e	70.12cd	73.88 a	70.46 c	68.71 d	71.84 b	73.75 a
Super P (spray)	65.70 g	62.80 h	65.98fg	69.22 d	64.76fg	64.92 f	68.6 d	71.46 b
Control	63.97 h	62.63 h	62.87 h	69.65 d	63.83gh	63.23 h	66.29 e	71.33bc
Head rice %								
Super P (soil)	72.05 a	64.95cde	64.82cde	66.88bc	64.07 bc	61.85 d	65.39ab	63.38 cd
Nano-P (spray)	70.62 a	62.85 e	67.61 b	65.83bcd	65.05 bc	61.94 d	66.93a	64.49 bc
Super P (spray)	60.28f	58.66 f	64.25de	55.08g	55.88 gh	57.67ef	61.91d	57.63efg
Control	59.61f	55.08 g	60.00 f	51.49h	56.11fgh	55.82h	59.20e	55.79h

Different letters indicate statistical significance ($P < 0.05$) within the same characteristic and the same year

The results of post-harvest milled grain analysis indicated that there were changes in nitrogen and phosphorus content percentages among the tested rice varieties as well as among phosphorus treatments (Table 9). Data showed that the highest values of nitrogen and phosphorus content percentages were obtained in Giza 179 rice variety. On the other hand application of phosphorus fertilizers as a soil or a foliar application enhanced the absorption of nitrogen and phosphorus by rice grains. Regarding the interaction effect, data in Table 10 showed that the application of different phosphorus treatments increased the uptake of nitrogen and phosphorus by all rice varieties. These results confirm that nutrients uptake is controlled by source and method of phosphorus application which was observed also by Miranda-Villagómez et al. (2019). Rock phosphate if use as nano form it may increase the availability of phosphorus to the plant because the direct application of rock phosphate nanoparticles on the crop may prevent

fixation in the soil similarly there is no silicic acid, iron, and calcium for fixation of the phosphorus hence it increases phosphorus availability to the crop plants (Qureshi et al., 2019; Suriyaprabha et al., 2012). Wang et al., 2011 found that applying nanomaterials fertilizer can increase NPK absorption amount of rice plants and promoting transportation of those nutrients to grains. Dhansil et al., 2018 observed that the application of phosphorus nanoparticles showed a positive relationship between nitrogen and phosphorus uptake by pearl millet.

Table 9. Nitrogen (%) and Phosphorus (%) of the tested rice varieties under phosphorus fertilizer treatments

Treatment	Nitrogen (%)		Phosphorus (%)	
	2017	2018	2017	2018
Varieties:				
Sakha 106	1.15 b	1.19 b	0.400 b	0.455 b
Sakha 107	1.16 b	1.16 c	0.39 b	0.42 c
Giza 177	1.08 c	1.10 d	0.39 b	0.42 c
Giza 179	1.24 a	1.30 a	0.43 a	0.48 a
F test	**	**	**	**
P treatments:				
Super P (soil)	1.19 b	1.25 b	0.41 a	0.46 b
Nano-P (spray)	1.23 a	1.29 a	0.42 a	0.48 a
Super P (spray)	1.20 ab	1.20 c	0.41 a	0.47 ab
Control	1.02 c	1.02 d	0.37 b	0.40 c
F test	**	**	**	**
Interaction effect	**	**	**	**

Values with the same letter in each column indicate no significant difference ($P < 0.05$)

Table 10. Nitrogen (%) and phosphorus (%) contents in milled rice grains as affected by the interaction between rice variety and phosphorus treatment

Treatments	2017				2018			
	Sakha 106	Sakha 107	Giza 177	Giza 179	Sakha 106	Sakha 107	Giza 177	Giza 179
	Nitrogen (%)							
Super P (soil)	1.20cde	1.19 def	1.08 gh	1.28ab	1.27cd	1.22de	1.12 f	1.39 b
Nano-P (spray)	1.22bcd	1.26abc	1.12fgh	1.30 a	1.20 e	1.28 c	1.13 f	1.52 a
Super P (spray)	1.20 cd	1.13 efg	1.18 def	1.30 a	1.27 cd	1.13 f	1.12 f	1.28 c
Control	1.00 ij	1.05 hi	0.95 j	1.07 gh	1.02 g	1.02 g	1.04 g	1.02 g
	Phosphorus (%)							
Super P (soil)	0.41 bc	0.40bcd	0.36 ef	0.46 a	0.43def	0.47 bc	0.44cde	0.49 b
Nano-P (spray)	0.41 bc	0.41 bc	0.41bcd	0.43 b	0.49 b	0.48 b	0.40 fg	0.54 a
Super P (spray)	0.42 bc	0.38 de	0.39cde	0.46 a	0.50 ab	0.45 cd	0.43 def	0.49 b
Control	0.35 f	0.36 ef	0.42 b	0.36 ef	0.38 g	0.40 fg	0.41 ef	0.40 fg

Different letters indicate statistical significance ($P < 0.05$) within the same characteristic and the same year

Conclusion

The results demonstrated that the tested rice varieties displayed differential phosphorus response depending on the source and method of phosphorus fertilizer used. Phosphorus supplied from superphosphate as a soil application exhibited a higher response than supplied as foliar application. Nano-phosphorus application as a foliar promoted yield, quality and NP uptake by rice grain. Further studies are needed on the effect of nano-phosphorus on rice varieties behavior under Egyptian condition.

REFERENCES

- [1] Batjes, N. H. (1997): A world data set of derived soil properties by FAO-UNESCO soil unit for global modeling. – *Soil Use and Management* 13(1): 9-16.
- [2] Benzon, H. R. L., Rubenecia, M. R. U., Ultra Jr, V. U., Lee, S. C. (2015): Nano-fertilizer affects the growth, development, and chemical properties of rice. – *International Journal of Agronomy and Agricultural Research* 7(1): 105-117.
- [3] Black, C. A. (1965): *Methods of Soil Analysis. Part 2: Chemical and Microbial Properties.* – Number 9 in Series Agronomy. American Society of Agronomy, Inc., Madison, WI.
- [4] Chapman, H. D., Pratt, P. F. (1961): *Method of Analysis for Soils Plant and Water.* – California Citrus Experiment Station, Univ. of California, Division of Agricultural Sciences, USA.
- [5] Cruz, N. D., Khush, G. S. (2000): Rice Grain Quality Evaluation Procedures. – In: Singh, R. K. et al. (eds.) *Aromatic Rices.* Mohan Pramlani for Oxford & IBH Publishing, New Delhi, pp. 15-28.
- [6] Dhansil, A., Zalawadia, N. M., Prajapat, B. S., Yadav, K. (2018): Effect of nano phosphatic fertilizer on nutrient content and uptake by pearl millet (*Pennisetum glaucum* L.) crop. – *International Journal of Current Microbiology and Applied Sciences* 7(12): 2327-2337.
- [7] Duncan, B. (1955): Multiple range and multiple F. test. – *Biometrics* 11: 1-42.
- [8] Miranda-Villagómez, E., Trejo-Téllez, L. I., Gómez-Merino, F. C., Sandoval-Villa, M., Sánchez-García, P., Aguilar-Méndez, M. Á. (2019): Nanophosphorus fertilizer stimulates growth and photosynthetic activity and improves P status in rice. – *Journal of Nanomaterials.* <https://doi.org/10.1155/2019/5368027>.
- [9] Giraldo, J. P., Landry, M. P., Faltermeier, S. M., McNicholas, T. P., Iverson, N. M., Boghossian, A. A., Reuel, N. F., Hilmer, A. J., Sen, F., Brew, J. A., Strano, M. S. (2014): Plant nanobionics approach to augment photosynthesis and biochemical sensing. – *Nature Materials* 13: 400-408.
- [10] Jackson, M. L. (1967): *Soil Chemical Analysis.* – Prentice Hall of India, New Delhi, pp. 144-197.
- [11] Jampilek, J., Kráľová, K. (2015): Application of nanotechnology in agriculture and food industry, its prospects and risks. – *Ecological Chemistry and Engineering Science* 22(3): 321-361.
- [12] Suriyaprabha, R., Karunakaran, G., Yuvakkumar, R., Rajendran, V., Kannan, N. (2012): Silica nanoparticles for increased silica availability in maize (*Zea mays* L) seeds under hydroponic conditions. – *Current Nanoscience* 8(6): 902-908.
- [13] Qureshi, A., Singh, D. K., Dwivedi, S. (2019): Nano-fertilizers: a novel way for enhancing nutrient use efficiency and crop productivity. – *International Journal of Current Microbiology and Applied Sciences* 7(2): 3325-3335.
- [14] Richardson, A. E., Simpson, R. J. (2011): Soil microorganisms mediating phosphorus availability. – *Plant Physiology* 156(3): 989-996.

- [15] Siddiqui, M. H., Al-Whaibi, M. H. (2014): Role of nano-SiO₂ in germination of tomato (*Lycopersicon esculentum*, seeds Mill.). – Saudi Journal of Biological Sciences 21(1): 13-17.
- [16] Upadhyaya, H., Begum, L., Dey, B., Nath, P. K., Panda, S. K. (2017): Impact of calcium phosphate nanoparticles on rice plant. – Journal of Plant Science and Phytopathology 1: 1-10.
- [17] Usman, K. (2013): Effect of phosphorus and irrigation levels on yield, water productivity, phosphorus use efficiency and income of lowland rice in northwest Pakistan. – Rice Science 20(1): 61-72.
- [18] Wang, F., Rose, T., Jeong, K., Kretzschmar, T., Wissuwa, M. (2016): The knowns and unknowns of phosphorus loading into grains, and implications for phosphorus efficiency in cropping systems. – Journal of Experimental Botany 67(5): 1221-1229.
- [19] Wang, X. J., Song, H. X., Liu, Q., Rong, X. M., Peng, J. W., Xie, G. X., Zhang, Z. H., Wang, S. J. (2011): Effects of nanopreparation coated nitrogen fertilizer on nutrient absorption and yield of early rice. – Hunan Agricultural Sciences 11: 021.
- [20] Watanabe, F. S., Olsen, S. R. (1965): Test of an ascorbic acid method for determining phosphorus in water and NaHCO₃ extracts from soils. – Soil Science Society of America Journal S29(6): 677-678.