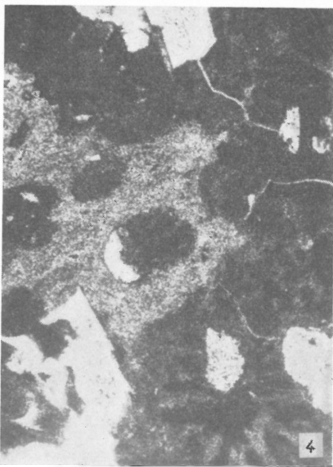
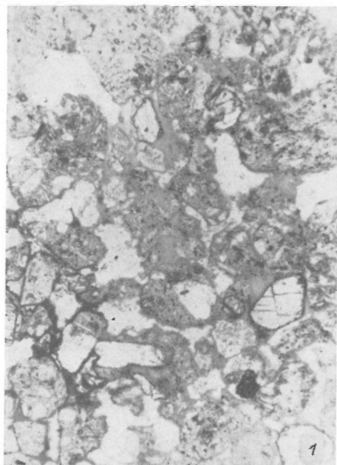
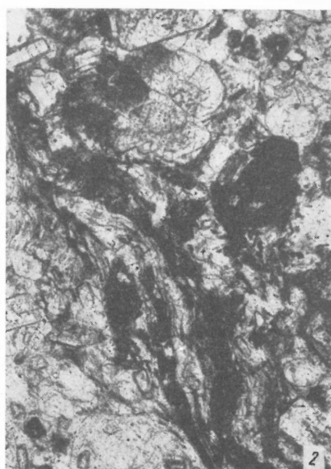


*Ilkeyné Perlaki E. : Vulkanai hipo- és meta-elváltozások*

XLVI. tábla

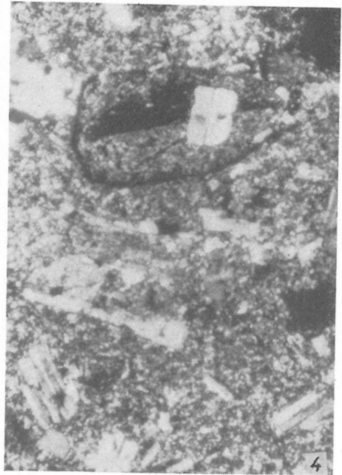
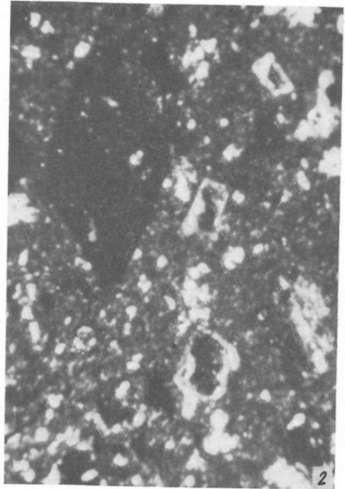
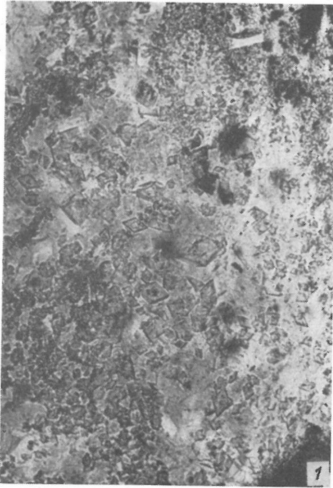


*Ilkayné Perlaki E. : Vulkáni hipo- és meta-elváltozások*

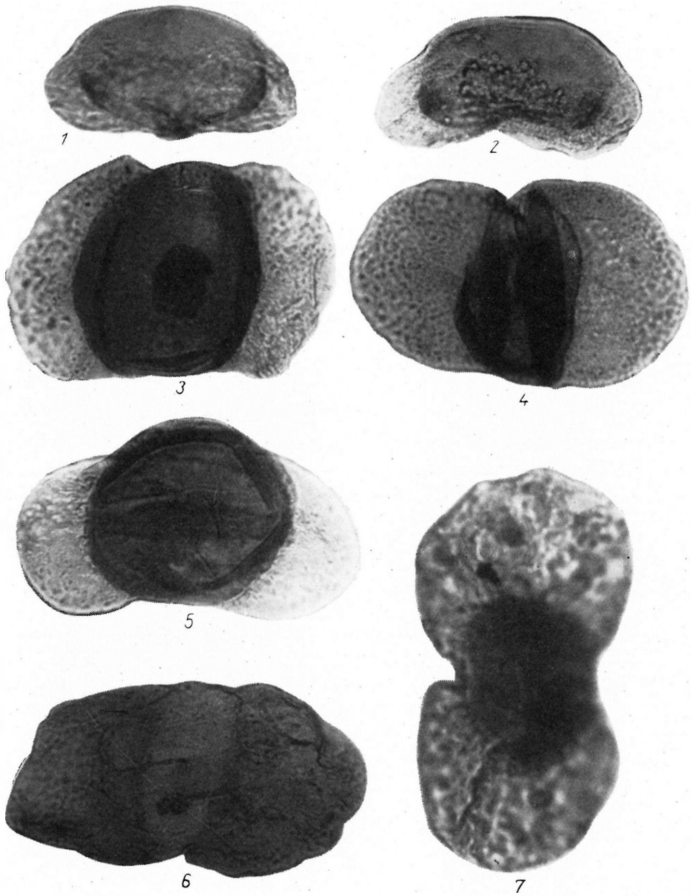


*Ilkeyné Perlaki E. : Vulkáni hipo- és meta-elváltozások*

XLVIII. tábla

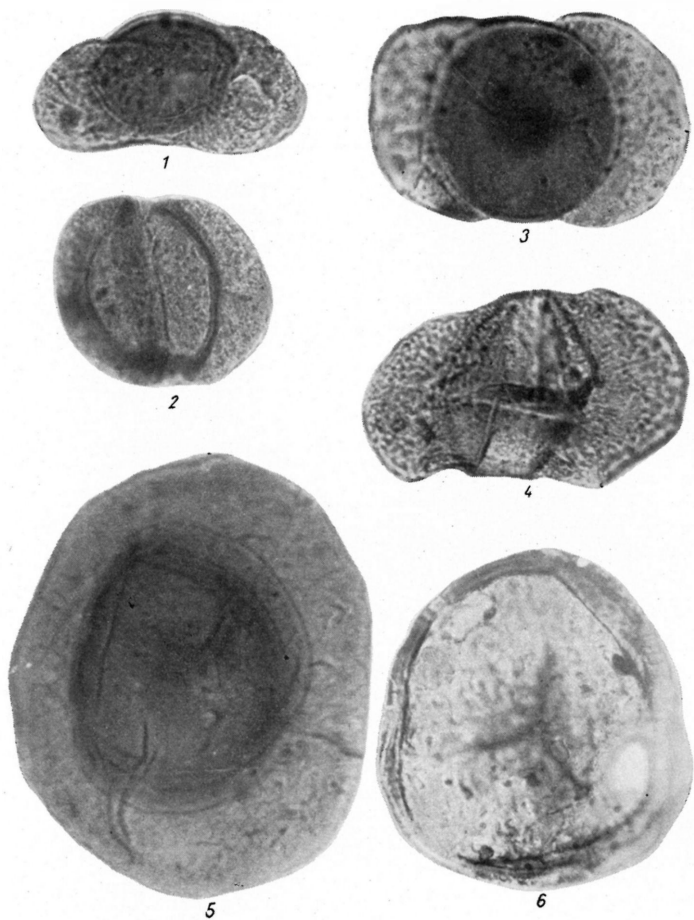


Vargáné Máthé K.: Kálimeszomatózis és kálifeldúsulás

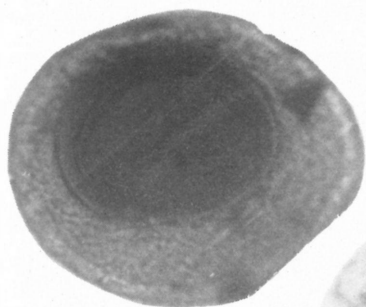


*Stuhl Á. : Balatonfelvidéki perm időszaki spóravizsgálatok*

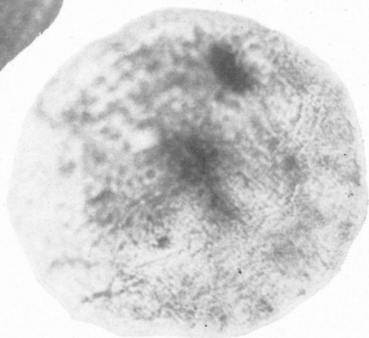
L. tábla



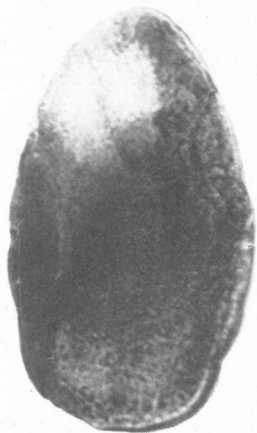
*Stuhl A. : Balatonfelvidéki perm időszaki spóravizsgálatok*



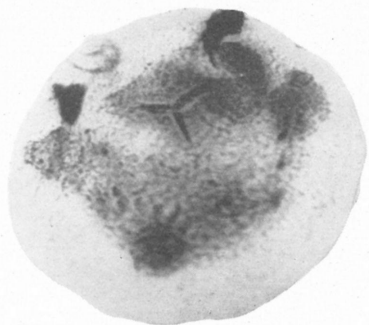
1



2



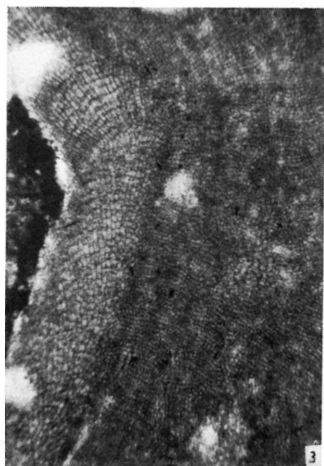
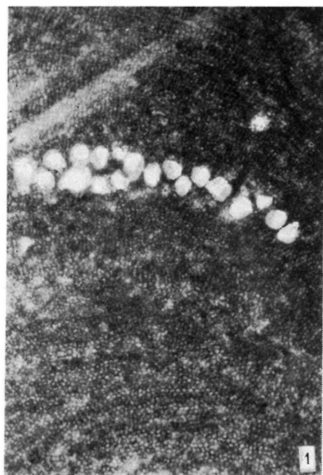
4



3

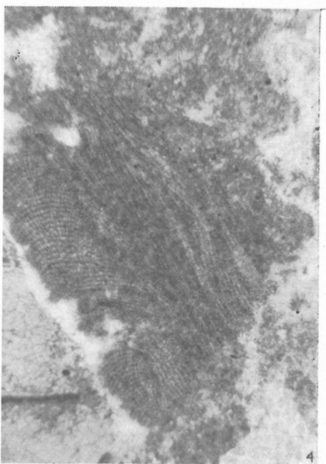
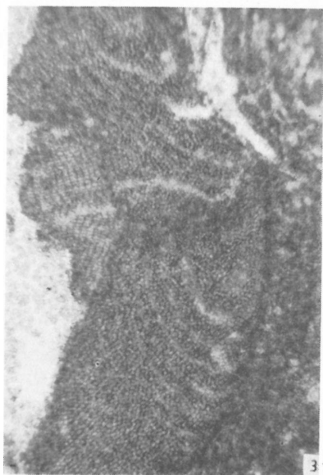
*Stuhl A. : Balatonfelvidéki perm időszaki spóravizsgálatok*

LII. tábla



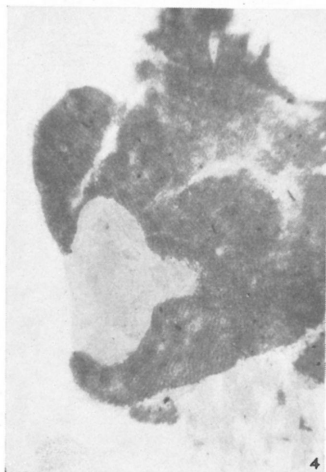
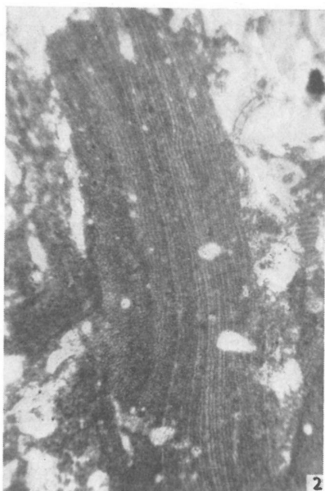
*Krivánné Hutter E. : Zátonyépitő vörösalgák*



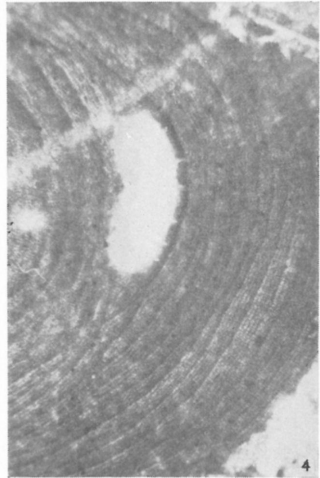
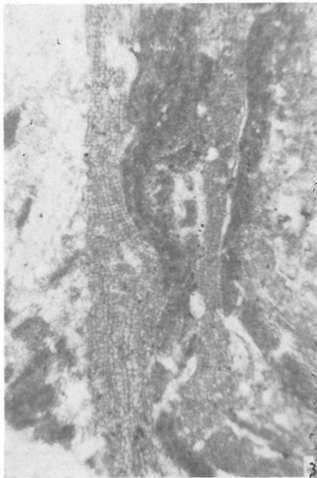
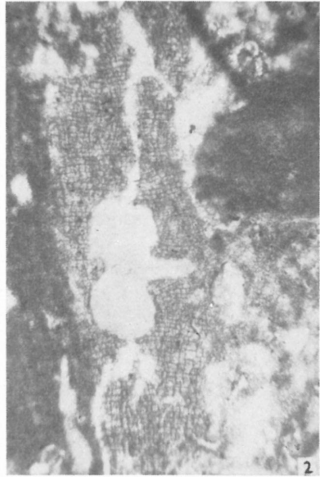


*Krivánné Hutter E. : Zátonyépitő vörösalgák*

LIV. tábla

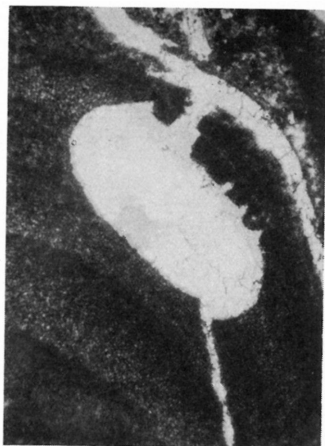


*Krivánné Hutter E. : Zátonyéptű vörösalgák*

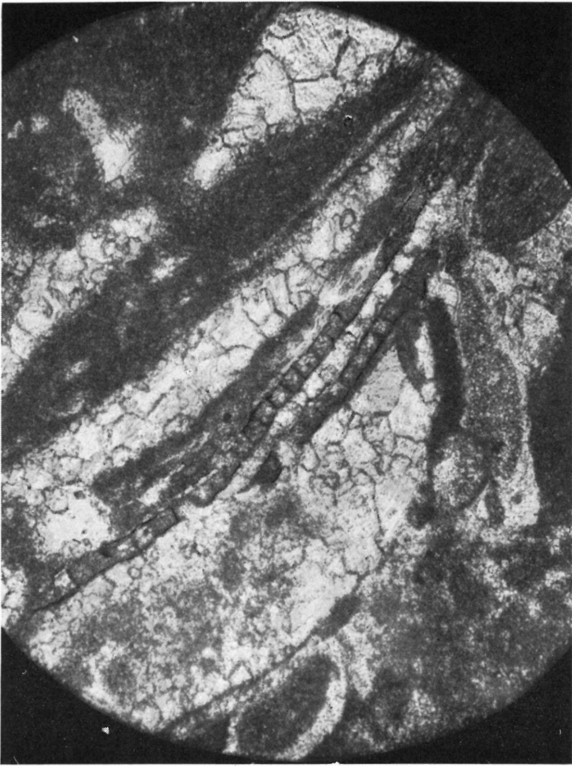


*Krivánné Hutter E. : Zátonyépitő vörösalgák*

LVI. tábla



*Krivánné Hutter E.: Zátonyépitő vörösalgák*



*Krivánné Hutter E. : Zátonyéptető vörösalgák*